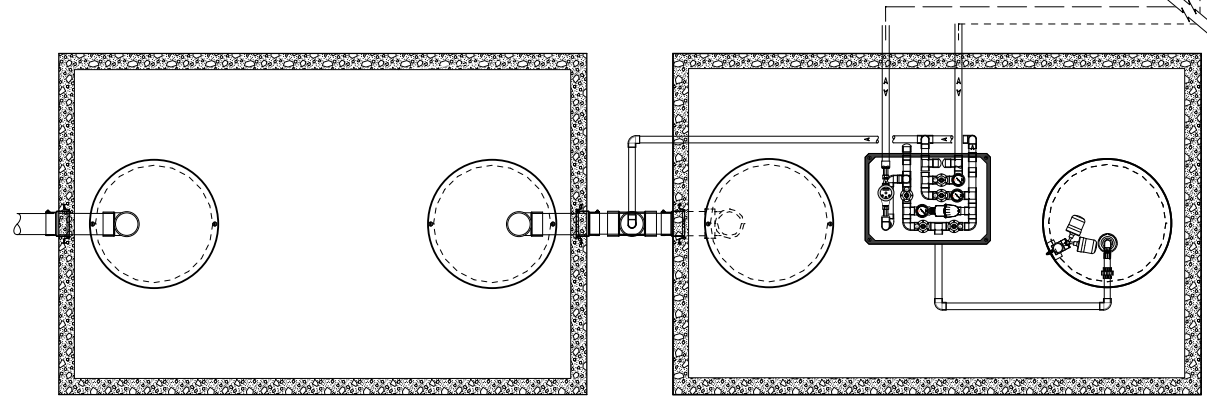
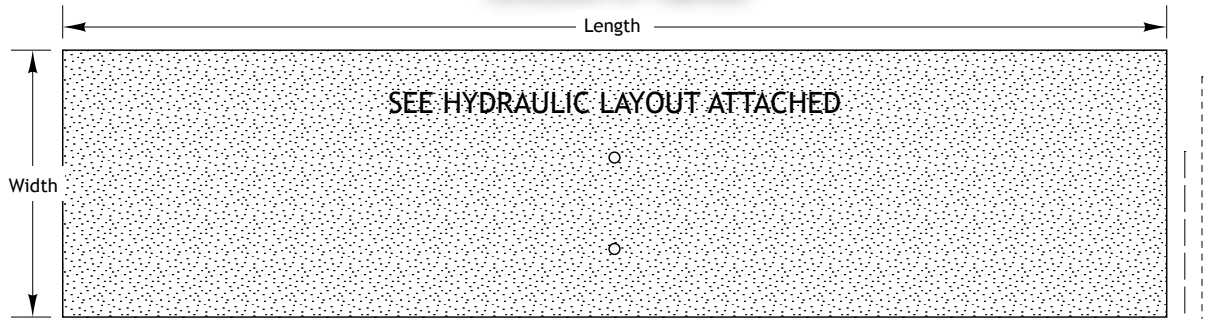


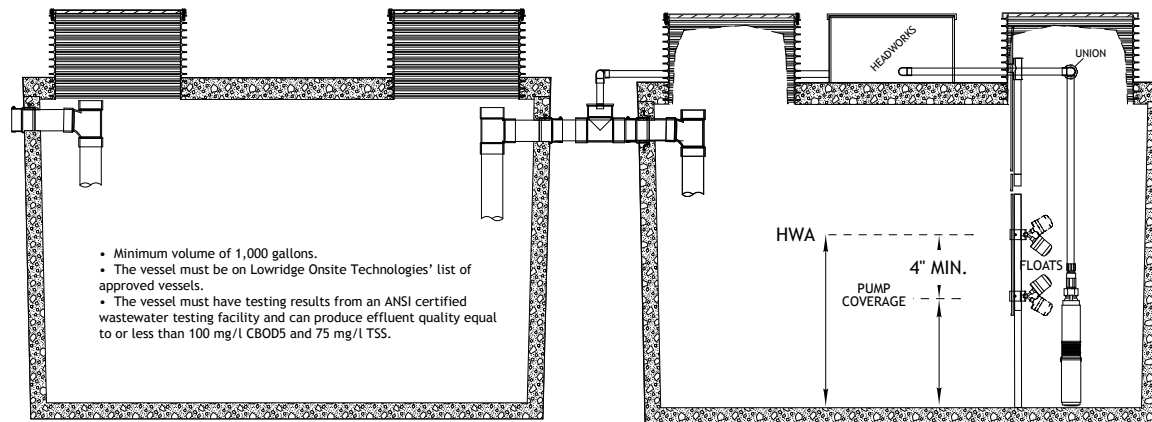
OSCAR-II-Tanks



PLAN VIEW

1000 Gallon Treatment Vessel

1000 Gallon Pre-cast Concrete Single Compartment Discharge Tank



- Minimum volume of 1,000 gallons.
- The vessel must be on Lowridge Onsite Technologies' list of approved vessels.
- The vessel must have testing results from an ANSI certified wastewater testing facility and can produce effluent quality equal to or less than 100 mg/l CBOD5 and 75 mg/l TSS.

CROSS SECTION

LOWRIDGE ONSITE TECHNOLOGIES

DRAWING ID: OS-II-Tanks

SCALE: NTS

DRAWN BY: DBM

CK BY: DAVE LOWE

DATE: 01.29.2019